

## ✧ Bangkok Grand Palace Tour ✧



### ✧ HIGHLIGHTS ✧



The Grand Palace & Emerald Buddha

### ✧ ITINERARY ✧

#### ⌚ Duration

Half Day app. 2.5-3.5 hours

- ☛ Pick up at hotel. **The Grand Palace** is a must see for every visitor to Bangkok. Located close to the banks of the **Chao Phraya River** (The River of Kings) the Grand Palace is the perfect example of an ancient Siamese court.
- ☛ Within the compound is the **Temple of The Emerald Buddha (Wat Pra Kaew)** which houses Thailand most precious image of the Lord Buddha. The Emerald Buddha is believed to have supernatural powers and is dressed in robes according to the season by the King of Thailand himself.

❧ QUOTATION ❧

Number of Pax	Net Rates per person (USD)
1 pax	110
2-5 pax	70
6-9 pax	60
10 pax +	55

❧ ADDITIONAL INFORMATION ❧

What's Included	What's Not Included
<ul style="list-style-type: none"> <li>➤ All overland private transfers with English speaking guide.</li> <li>➤ All admission fees and activity expenses, as noted in the itinerary</li> </ul>	<ul style="list-style-type: none"> <li>➤ International &amp; domestic flights and relevant taxes</li> <li>➤ Thailand tourist visa, which is required for most foreign passport holders</li> <li>➤ Meals, excursions and activities not included in the itinerary</li> <li>➤ Expenses of a personal nature, Discretionary gratuities for guides and chauffeurs</li> </ul>

❧ NOTES OR FAQ's ❧

- Please note that for visiting the Grand Palace you will be required to wear proper attire (no bare shoulder bare knees or strapless-heel shoes). Shoes must be removed before entering all temple buildings as a matter of respect.
- Transfers only from/to hotels in the city-center (Prathunam Silom lower Sukhumvit Riverside) are included in the tour- price. For transfers from/ to Airport- hotels or hotels outside of the city- center surcharges may be applied.

❧ SINGLE TRANSFER BETWEEN AIRPORT & HOTEL ❧  
\*INCLUDING ENGLISH-SPEAKING GUIDE

Number of Pax	Net Rates per person (USD)
1 pax	75
2-5 pax	40
6-9 pax	30
10+ pax	25

❧ HOTEL ❧

4 Stars

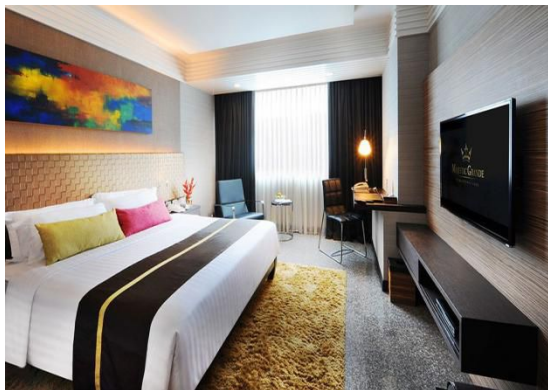
**FuramaXclusive Asoke**



**Deluxe King/ Twin Room**

**USD 80/per room/per night including breakfast**

**Majestic Grande Hotel**



**Grande Superior King/ Twin Room**

**USD 85/per room/per night including breakfast**

5 Stars

**Dusit Thani Hotel Bangkok**



**Superior King/ Twin Room**

**USD 160/per room/per night including breakfast**

**Conrad Bangkok**



**Deluxe King/ Twin Room**

**USD 175/per room/per night including breakfast**