

✧ Bangkok Highlights: City/Temples & Klong Tour ✧



✧ HIGHLIGHTS ✧



✧ ITINERARY ✧

🕒 Duration

1 Day app. 5.5-7 hours

- ☛ Pick up at hotel. Visit two of the most important sights of Bangkok: **the Reclining Buddha** at Wat Pho is a giant lying Buddha covered in gold leaf. **The Grand Palace** is a must see for every visitor. Located close to the banks of the Chao Phraya River the Grand Palace is the perfect example of an ancient Siamese court. Within the compound is the Temple of **The Emerald Buddha (Wat Pra Kaew)**
- ☛ Lunch will be served in a Thai restaurant. **Travel on the Chao Phraya River** (The River of Kings) and on through the Klongs (canals) of Thonburi. You will have the chance to observe and photograph the serene family homes and temples along the waterways which gave the city the name Venice of the East.
- ☛ You will also pay a visit to one of the most photographed sights in Bangkok the **Wat Arun**. The majestic shrine has a pagoda of 76 m high. It is decorated with glazed ceramic pieces that reflect the rising sun and gave the temple its name.

❧ QUOTATION ❧

Number of Pax	Net Rates per person (USD)
1 pax	255
2-5 pax	150
6-9 pax	125
10 pax +	105

❧ ADDITIONAL INFORMATION ❧

What's Included	What's Not Included
➤ All overland private transfers with English speaking guide.	➤ International & domestic flights and relevant taxes
➤ All admission fees and activity expenses, as noted in the itinerary	➤ Thailand tourist visa, which is required for most foreign passport holders
➤ Meal as specified in the itinerary	➤ Excursions and activities not included in the itinerary
	➤ Expenses of a personal nature, Discretionary gratuities for guides and chauffeurs

❧ NOTES OR FAQ's ❧

- Please note that for visiting the Grand Palace you will be required to wear proper attire (no bare shoulder bare knees or strapless-heel shoes). Shoes must be removed before entering all temple buildings as a matter of respect.
- The Stupa of Wat Arun will undergo a renovation from September 2013 for approx. 3 years. The temple compound will remain open and the excursion will be operated as usual.
- Transfers only from/to hotels in the city-center (Prathunam Silom lower Sukhumvit Riverside) are included in the tour- price. For transfers from/ to Airport- hotels or hotels outside of the city- center surcharges may be applied.

❧ SINGLE TRANSFER BETWEEN AIRPORT & HOTEL ❧

*INCLUDING ENGLISH-SPEAKING GUIDE

Number of Pax	Net Rates per person (USD)
1 pax	75
2-5 pax	40
6-9 pax	30
10+ pax	25

❧ HOTEL ❧

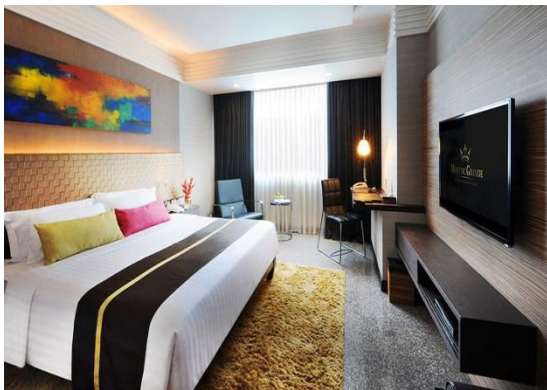
4 Stars

FuramaXclusive Asoke



Deluxe King/ Twin Room
USD 80/per room/per night including breakfast

Majestic Grande Hotel



Grande Superior King/ Twin Room
USD 85/per room/per night including breakfast

5 Stars

Dusit Thani Hotel Bangkok



Superior King/ Twin Room
USD 160/per room/per night including breakfast

Conrad Bangkok



Deluxe King/ Twin Room
USD 175/per room/per night including breakfast
